



Super Win Menu

Contents

Thank you	4
Part 1 Introduction	5
1 Description.....	6
2 Benefits.....	7
3 Features.....	8
4 Screenshots.....	9
5 System Requirements.....	11
Part 2 Purchasing / Support	13
1 Buy	14
2 Support.....	15
3 Producer.....	16
Part 3 Operating Instructions	17
1 Installation.....	18
2 Start Program.....	19
3 Settings.....	20
General Settings	21
Appearance	23
4 Operation.....	25
General Operation	26
Additional Functions	27
5 Update	28
Part 4 Licence Agreement	29
Index	31

Thank you

Thank you very much for using Super Win Menu.

***"Everything should be as simple
as it is, but not simpler."***

Albert Einstein

1 Introduction



Super Win Menu

Open programs and documents directly,
clearly structured with a few mouse clicks only.

Version 1.12

www.infonautics.ch/superwinmenu

©2012 Infonautics GmbH, Switzerland

1.1 Description

With the start menu **Super Win Menu** for Microsoft Windows™ regularly used applications and documents can be opened and started fast and directly. The current used working environment is available immediately. No tiresome clicking through different folder levels is needed in order to start a requested program or to open a recently used document. The start menu **Super Win Menu** shows the content of your PC at a glance.

By positioning the mouse pointer over the program icon in the screen corner the start menu of **Super Win Menu** shows up. The clear structure of "Programs running", "Most used", "Last used" and "Recent documents" allows to start immediately the requested application or to open a document by a single mouse click.

Based on the user's activities **Super Win Menu** automatically memorizes which applications are frequently used during the daily work. According to the number of calls these applications are listed in a continuously updated order under "Most used". Thus, regularly used programs can be started by a single click only. The last started programs are listed under "Last used". In order to access edited documents quickly, the recently opened documents, images, spreadsheets, PDFs. etc. are listed under "Recent documents". Either the last 15 documents in chronological order or as desired all recorded documents in alphabetical order. In case the screen area is not large enough to show the complete list, further pages can be displayed by clicking on "More documents..." or "More programs...".

The design of **Super Win Menu** can individually be adapted according to the personal desktop. Many different skin designs are provided with the software. Furthermore, design interested users can modify the skins of **Super Win Menu** according to their own tastes.

Super Win Menu runs on all Windows versions (from Windows XP and newer) and is available in the languages English and German.

Super Win Menu can be tested thoroughly free of charge before purchase. When installing the software no modification will be taken on your system and the program can be easily uninstalled in case you might not be satisfied.

The costs for a Single-User Licence are USD 20.-. There is also a Business Licence (for up to 10 PCs within the same company) as well as a Corporate Licence (for an unlimited number of PCs within the same company) available. The licences are non-expiring and valid for all future updates.

1.2 Benefits

- **Fast access** to applications and documents.
- **No tiresome clicking** through nested folders in order to start programs or to open documents.
- **Content of PC** is clearly displayed at a glance by Super Win Menu.
- **Current working environment** is always available.
- **Simplification of your daily work** through automatically updated display of "Most used programs", "Last used programs" and "Recent opened documents".
- **Easy installation** of the software on your Windows™-PC (Windows XP and newer).
- **Easy adaptation of the look and feel** according to personal desktop is possible.
- **Suitable for any user**; equally for novices and experts due to the intuitive user interface.
- **Extensive help system**, as well as printable manual.
- **Support** by email within 48 hours in the languages German and English.

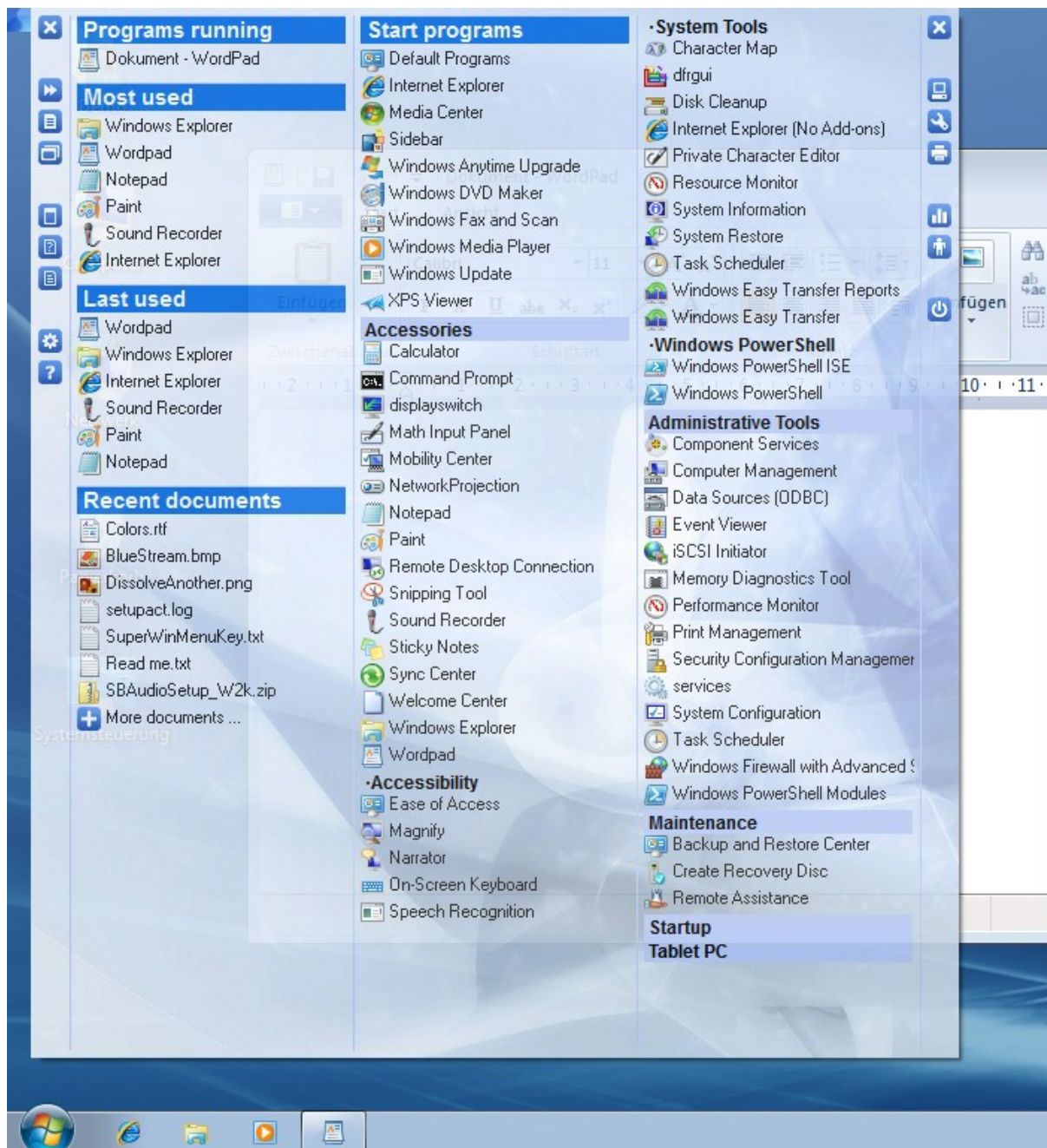
1.3 Features

- **Menu will be shown automatically** when positioning mouse pointer in the screen corner, optionally also by an additional mouse click.
- **All programs installed on the PC** are displayed at a glance, clearly arranged for selection and can be started immediately by a single mouse click only.
- **Choose running programs** and move the corresponding window to the foreground and enlarge in case the window was minimized (task-switcher).
- **Most used programs** can directly be selected and started.
- **Last used programs** can directly be selected and started.
- **Last used documents** can directly be selected and started. Two-stage selection: lasted documents chronologically ordered and all recorded documents alphabetically ordered.
- **General display option** in order to show and hide "Last documents" and "Start programs".
- **Display option for programs** in order to include or exclude "Applications", "Help files" or "Other files".
- **Direct start of Windows features** as "Windows Explorer", "Control Panel", "Printer", "Task Manager", "Run.." "Turn Off Computer".
- **Adaptation of look and feel** for colors, background image, column width, transparency.
- **Many different templates (skins) are supplied** with the software and can be adapted individually.
- **Application can automatically be started with Windows.**
- **Extensive manual** in German and English.

1.4 Screenshots

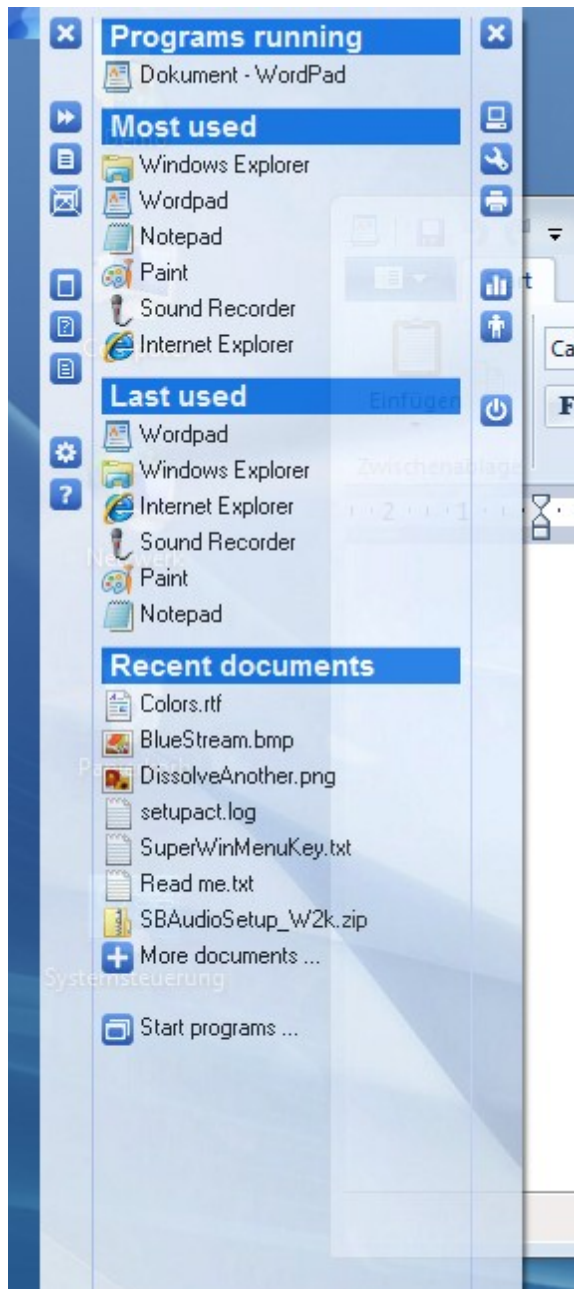
Display option with all programs listed

All basic headings are shown including "Recent documents" and "Start programs". (For the manual lesser entries than normal are displayed.)



Display option without programs listed

All basic headings are shown including "Recent documents". The heading "Start programs" is hidden here and can be accessed by the link "Start programs...".



Programs running

According to the taskbar all running programs are shown and can be brought to foreground by a mouse click, respectively restored if minimized.

Most used

Often used programs are shown here. The most used program is listed upmost. Each program can be started by just one mouse click.

Last used

The last used programs are listed chronologically and can be started by just one mouse click.

Recent documents

Either the recently used documents in chronological order or all recorded documents in alphabetical order by "More documents..." can be opened by just one mouse click.

"Start programs..."

shows all available programs as in the illustration "Display option with all programs listed" above.

The buttons at the left margin of the menu control the options of Super Win Menu, the buttons at the right margin start important features of Windows. See [Operating Instructions](#)^[17].

1.5 System Requirements

Operating System: Microsoft Windows™ XP / Vista / 7 (Different versions for 32bit and 64bit systems)

Main memory RAM: about 20 MB

Program space on disk: about 10 MB

2 Purchasing / Support

The program **Super Win Menu** has been developed by Infonautics GmbH Switzerland and is distributed as shareware, i.e. after the testing phase a licence key per PC/user has to be purchased for a regular use of the software.

During the testing phase, as long as no valid licence key has been entered, following restrictions of the software apply:

- At regular intervals a dialog for entering the licence number is appearing.

Licence types

- **Single:** The software can be installed as single licence on one PC. The licence refers to the name of the user. For any further PC an additional licence is requested.
- **Business:** The software can be installed on up to 10 PCs maximum within the same company. The licence refers to the name of the company.
- **Corporate:** Within the same company the program can be installed on any number of PCs. The licence refers to the name of the company.

For further information see: [Buy Licence](#)^[14]

2.1 Buy

The software **Super Win Menu** is shareware. It can be downloaded and tested free of charge at:

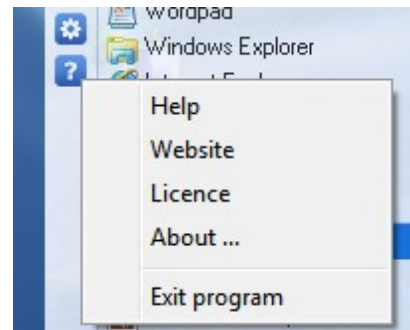
<http://www.infonautics.ch/superwinmenu>

For a regular use a **licence key** is needed which can be bought online and will be forwarded by email:

<http://www.infonautics.ch/superwinmenu/buy>

Copy the licence key which has been forwarded by email into the licence window available in the help menu "?" "Licence". Then restart the program.

For further information see: [User manual](#)^[17] / [Installation](#)^[18]



2.2 Support

Support for **Super Win Menu** is available by email. Any questions will be answered within 48 hours in English or German:

superwinmenu@infonautics.ch

Any suggestions by you regarding new program features or criticism will be appreciated too.

Please check also the latest answers at "**Frequently Asked Questions**" (FAQ); there are many questions already clearly answered:

English: <http://www.infonautics.ch/superwinmenu/faq>

German: <http://www.infonautics.ch/superwinmenu/hgf>

2.3 Producer

INFONAUTICS GmbH

Eichholzweg 16
CH-6312 Steinhausen
Schweiz / Switzerland

Phone +41 41 7431001
Fax +41 41 7431002

Homepage www.infonautics.ch
Email superwinmenu@infonautics.ch

INFONAUTICS GmbH was founded in 1995 and is based in Steinhausen / Switzerland. The core competences of the company are in the following fields:

- Software development
- Internet solutions
- Online booking systems
- Quality management software

Based on 20 years of experience in software development on many different operating systems the company is able to realize innovative and reliable solutions for the business of small and mid caps. Infonautics GmbH offers user-friendly, reasoned and successful solutions which can easily be integrated into already existing business transactions.

Our guidance motive reads accordingly:

Software solutions - Clever. Easy. Reliable.

INFONAUTICS GmbH is member of following organizations:



3 Operating Instructions



Super Win Menu

Operating Instructions

Version 1.12

<http://www.infonautics.ch/superwinmenu>

©2012 Infonautics GmbH, Switzerland

3.1 Installation

Super Win Menu can be installed fast and easily.

The appropriate version corresponding to the operating system will be installed automatically (32/64 bit).

Installation

First download the latest installation file in the requested language to your PC:

<http://www.infonautics.ch/superwinmenu>


Then start the installation program "SuperWinMenuEN.exe" and confirm all questions and indications positively. Thereupon, a new program group "Super Win Menu" will be shown in the start menu.

When you start the installed program **Super Win Menu** for the first time please verify your personal '[Settings](#)'^[20] according to the operating instructions.

3.2 Start Program

Start the program **Super Win Menu** for the first time in the program group "Super Win Menu" listed in the Windows start menu.

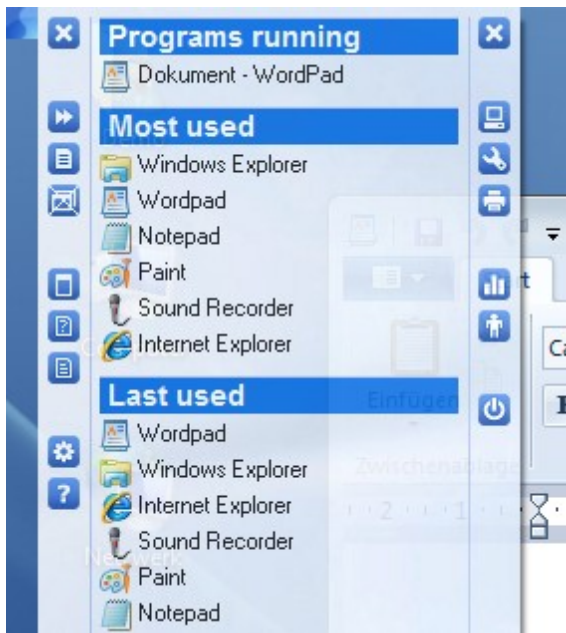
The program will mostly configure itself.


The new start menu of **Super Win Menu** will show up by moving the mouse pointer over the program icon  in the screen corner or by clicking on this icon.


Define your personal settings according to the operating instructions, see [Settings](#)^[20], where you also can define that **Super Win Menu** starts automatically at Windows startup.

3.3 Settings

The personal **Settings** of the program **Super Win Menu** can be defined in the window "Settings".

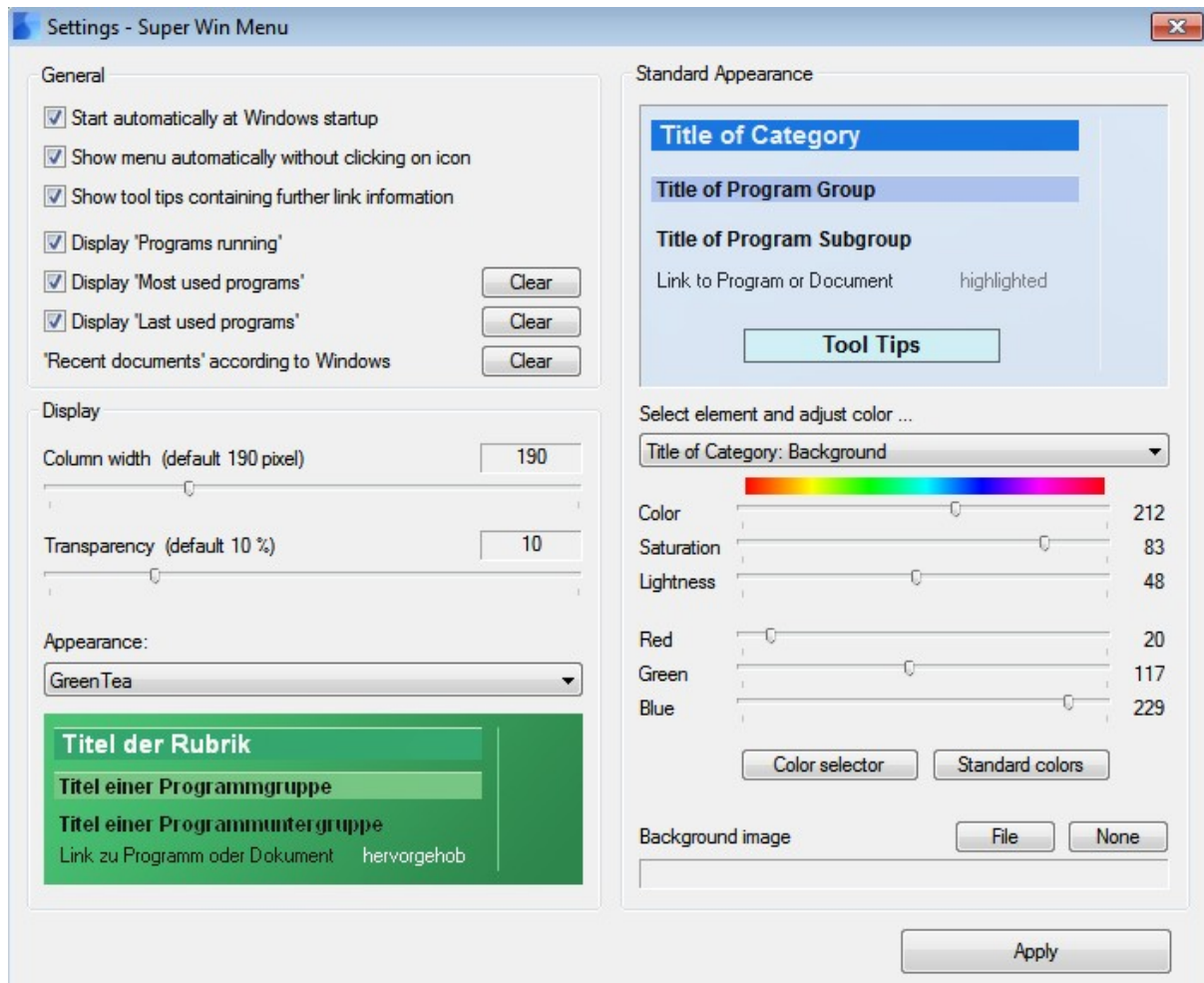



Show the **start menu** of **Super Win Menu** by moving the mouse pointer over the program icon  in the screen corner or by clicking on the icon.


In order to open the window "**Settings**" simply click on the icon  on the left side of the menu window.

3.3.1 General Settings

The **General settings** define the general behavior of the program.



Start automatically at Windows startup: the Super Win Menu application will automatically be started with Windows and is always available by the program icon  in the screen corner.

Show menu automatically without clicking on icon: the start menu of Super Win Menu will automatically show up by moving the mouse pointer over the program icon . No additional click on the icon is needed.

Show tool tips containing further link information: by moving the mouse pointer over a menu entry further additional information will be shown (file name, path, date/time, calls).

Display "Programs running": The section "Programs running" is displayed by default.

Likewise the task bar all running programs are displayed and can be moved to the foreground by a mouse click, respectively restored if minimized.

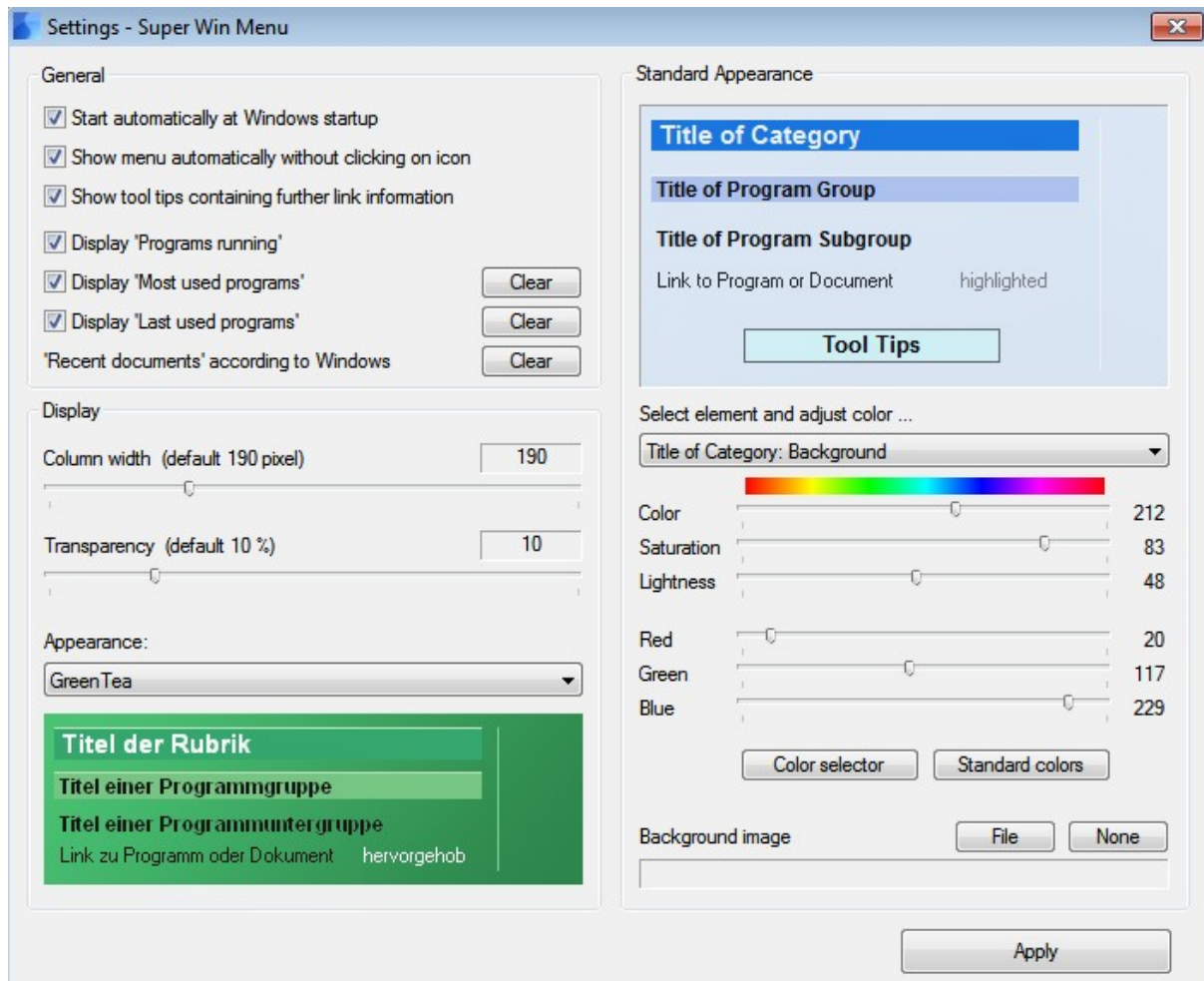
Display "Most used programs": The section "Most used" is displayed by default. Often used programs are listed here. The most used program is listed upmost. The button "Clear" deletes all entries in this list.

Display "Last used programs": The section "Last used" is displayed by default. The last used programs are listed chronologically, the last one upmost. The button "Clear" deletes all entries in this list.

"Recent documents" according to Windows: The section "Recent documents" is displayed by default. These entries are managed in the background by Windows. Super Win Menu displays the recently used documents (according to the Windows start menu "Documents") in chronological order and can additionally supply a more comprehensive list of all memorized documents in alphabetical order.

3.3.2 Appearance

The **appearance** of Super Win Menu can be modified in two ways. Either one of the many **templates (skins)** can be activated or the **standard appearance** can be adjusted manually.




Column width: the column width of the listed programs/documents can be defined.


Transparency: the menu of Super Win Menu can be transparent. The transparency can be defined between 0% (no transparency) and 50% (half transparency).

Appearance: Either the standard appearance can be adjusted manually or one of the many supplied templates (skins) can be activated. When a template (skin) is chosen, a preview below shows the looking of the skin. If the standard appearance is selected no preview is available, then the settings on the right side under "Standard Appearance" are applied.

Standard Appearance: In the rectangle at the top the present Standard Appearance including transparency is shown in real-time. Now, all the elements can be changed according to personal taste. In order to change an element the relating element has to be


selected under "Select element and adjust color...". Then the color of the requested element can be adjusted by changing the values for color / saturation / lightness (HSL color system). The visual effect is shown immediately above. Alternatively the color can be adjusted by changing the values of Red / Green / Blue (RGB color system). The sliders of the other color system are automatically and instantly adjusted accordingly. The Windows conform "Color selector" offers another opportunity to change the color of an element. By clicking on "Standard colors" all the adjustments will be reset to the default appearance. Under "Background image" a JPG or BMP image file can be defined as the background of the menu display. If you do not wish a background image for the menu delete it by clicking on "None".

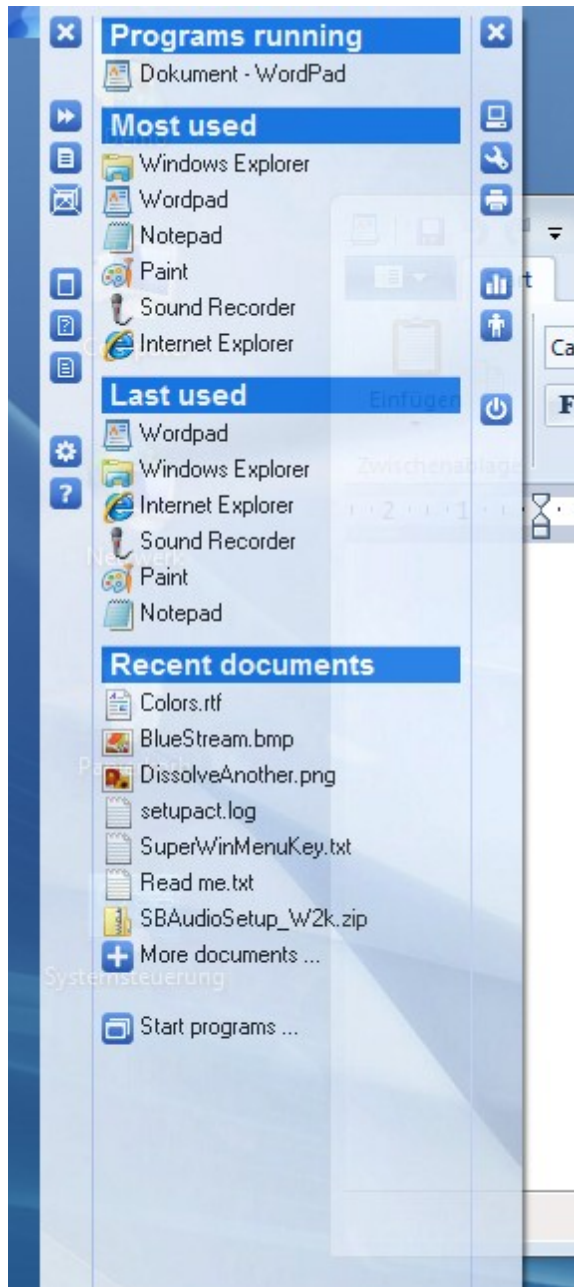
 By holding down the Shift key and clicking on the skin preview picture the settings of this relating template can be copied to "Standard Appearance" for further adjustments.

 In order to achieve a glass-like effect for the menu window of Super Win Menu, choose for its background the same image as for the desktop background.

The adjustments/settings become active as soon as the window "Settings" has been closed by clicking on "Apply".

3.4 Operation

The **start menu** of **Super Win Menu** will be show up by moving the mouse pointer over the program icon  in the screen corner or by clicking on the program icon. After the first call of the start menu of Super Win Menu following sections will be displayed, initially without the section "Start programs".



Programs running

According to the taskbar all running programs are shown and can be moved to the foreground by just one mouse click, respectively restored if minimized.


Most used

Often used programs are shown here. The most used program is listed upmost. Each program can be started by just one mouse click.




Last used

The last used programs are listed chronologically and can be started by just one mouse click.

Recent documents

Either the recently used documents in chronological order can be opened by just one mouse click, or all recorded documents in alphabetical order by clicking on  "More documents...".

"Start programs..."















The section "Start programs" is not displayed by default. By clicking on  "Start programs..." all available applications will be displayed for selection. In order to always display all available programs in the section "Start programs" please activate it by changing the corresponding switch from  to .

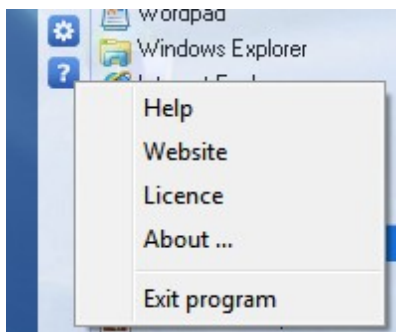
3.4.1 General Operation

In the **start menu** of **Super Win Menu** there are all necessary functions for its operation available.

Basically, any application or document can be started/opened by clicking on the corresponding entry title. The menu window will automatically close again as soon as one has clicked on an entry, or on the desktop beside the menu window, or on any another window.

Program-specific functions of Super Win Menu are available **on the left margin** of the menu window:

-  **Close the menu window explicitly** without quitting the application.
-  **Show next page** in case there is not enough space to display all applications on one page, respectively to display "Start programs" if this section is hidden by default.
-   **Section "Recent documents"** show/hide by default.
-   **Section "Start programs"** show/hide by default.
-   Include/exclude **applications** when displaying the section "Start programs".
-   Include/exclude **help files** when displaying the section "Start programs".
-   Include/exclude **other documents** when displaying the section "Start program".
-  Show **program settings** in a separate window.
-  Show **help menu** for the selection of following information:



Help to display this help document.

Website of Super Win Menu.







Licence to buy and enter the licence key.

About... to display the actual program version.

Exit program in order to quit the program completely.


3.4.2 Additional Functions

Additional functions for immediate access to important Windows features are available **at the right margin** of the menu window:

-  Open Windows **Explorer** for file organization.
-  Open Windows **Control Panel**.
-  Open Windows **Devices and Printers** management.
-  Open Windows **Task Manager** for application and process management.
-  Open Windows **"Run..."** in order to start an application or open a document manually.
-  Open Windows dialog **"Turn off computer"** to shut down Windows.

3.5 Update

The **update process to a newer program version** is as follows:

1. Download latest program version at: <http://www.infonautics.ch/superwinmenu>
2. Close Super Win Menu: click on  and choose "Exit program".
3. Install latest program version into the same folder of the already existing version.
4. Restart Super Win Menu.

After the program update all settings remain unchanged.

4 Licence Agreement

The program 'Super Win Menu' has been developed by Infonautics GmbH Switzerland and is distributed as shareware, i.e. after the testing phase a licence key per PC/user has to be purchased for a regular use of the software.

The activated full version of the software is restricted to the customer only. There is one licence per PC needed.

The Software and all corresponding information material is owned and copyrighted by Infonautics GmbH, Switzerland. The Software must not be copied nor may it be used by any third party unless permitted explicitly by Infonautics GmbH in written form. The Software must not be modified, decompiled, disassembled nor otherwise reverse-engineered in any way.

The user of the Software is obligated to inform Infonautics GmbH in case of knowledge of any infringement of copyright or other intellectual property rights through third party.

By installing and using the Software the user agrees explicitly that Infonautics GmbH is not liable for any direct or indirect, special, incidental or consequential damages including, without limitation, damages for loss by work stoppage, computer failure or malfunction, data loss, or for any and all other damages or losses.

Any other services supplied by third parties to the customer are on no account subject of this Agreement. The Infonautics GmbH will not be liable for such services and products. Problems with the Software will be solved as soon as possible by Infonautics GmbH according to their personnel, technical and financial possibilities. Infonautics GmbH supports the customer with the use of the Software as good as possible. If this support exceeds the usual measure, or the corresponding reason is an improper operation or failure of the customers equipment, Infonautics GmbH will reserve the right to take into account the additional expenditure.

If any provision of this Licence Agreement is found void or unenforceable, the remainder will remain valid and enforceable according to its terms.

This Agreement will be governed by the laws of Switzerland. Place of jurisdiction is the court responsible for the domicile of Infonautics GmbH, Switzerland.

Infonautics GmbH
Eichholzweg 16
CH-6312 Steinhausen
Switzerland

Phone 041-7431001
Fax 041-7431002

Email info@infonautics.ch
Internet www.infonautics.ch

©2012 Copyright by Infonautics GmbH, Switzerland

Index

3

32bit 18

6

64bit 18

A

Appearance 23

B

Benefits 7
Buy 13, 14
Buy online 14

D

Description 6
Developer 16

E

Email 15
Enter licence key 14

F

FAQ 15
Features 8
Functions 8

G

General settings 21

I

Infonautics GmbH 16
Installation 18
Introduction 5

L

Licence agreement 29
Licence key 13, 14
Licence types 13

M

Main menu 19
Manual 17

O

Operating instructions 17
Operating System 11
Operation 25, 26, 27

P

Producer 16
Program start 19
Purchasing 13

R

Requirements 11
Restrictions 13

S

Screenshots 9
Settings 20
Shareware 14
Skin 23
Starting the program 19
Support 15
System Requirements 11

T

Template 23

U

Update 28

